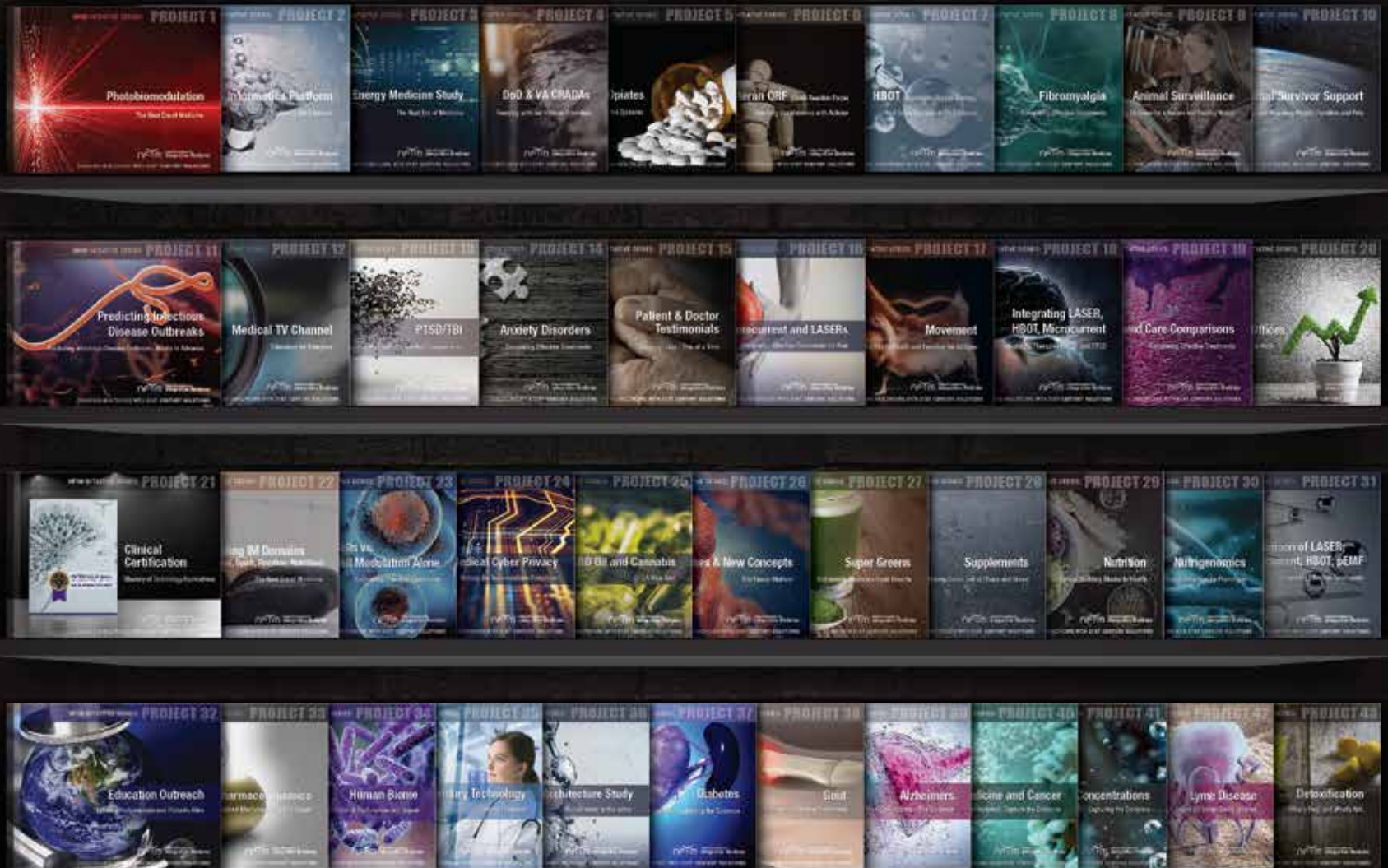




National Foundation for
Integrative Medicine

CHANGING HEALTHCARE WITH 21ST CENTURY SOLUTIONS



Join our foundation today and support the mission by donating at www.NFIM.org

Changing Healthcare with 21st Century Solutions.

NFIM is a Non-Profit Foundation committed to finding 21st century medical solutions. Our goals are simple: safely restore your vibrant health; support transformational Research and Development (R&D); drive technology transition into clinical practice; assist practitioners with CME, education and technology options; and ultimately guide our nation back to health. We do not accept chronic illness as the normal condition for your family, your loved ones or our nation. America now ranks last in overall health of industrialized countries according to several sources. This, despite the billions we spend on health care through your taxes and insurance co-payments. The current system is focused on 'Health Care' rather than on 'Health' and we will change that.

Sadly, without rapid significant change, 18 years on the same trajectory will render many folks quite ill with chronic pain and illness.

NFIM searches globally for evidence based treatments that are safe and effective.

Our goal is to shorten the technology transition cycle from 18 to 2 years by 2027. We will help guide America to becoming one of the top 5 of healthiest countries by 2030.

Evidence Based Medicine

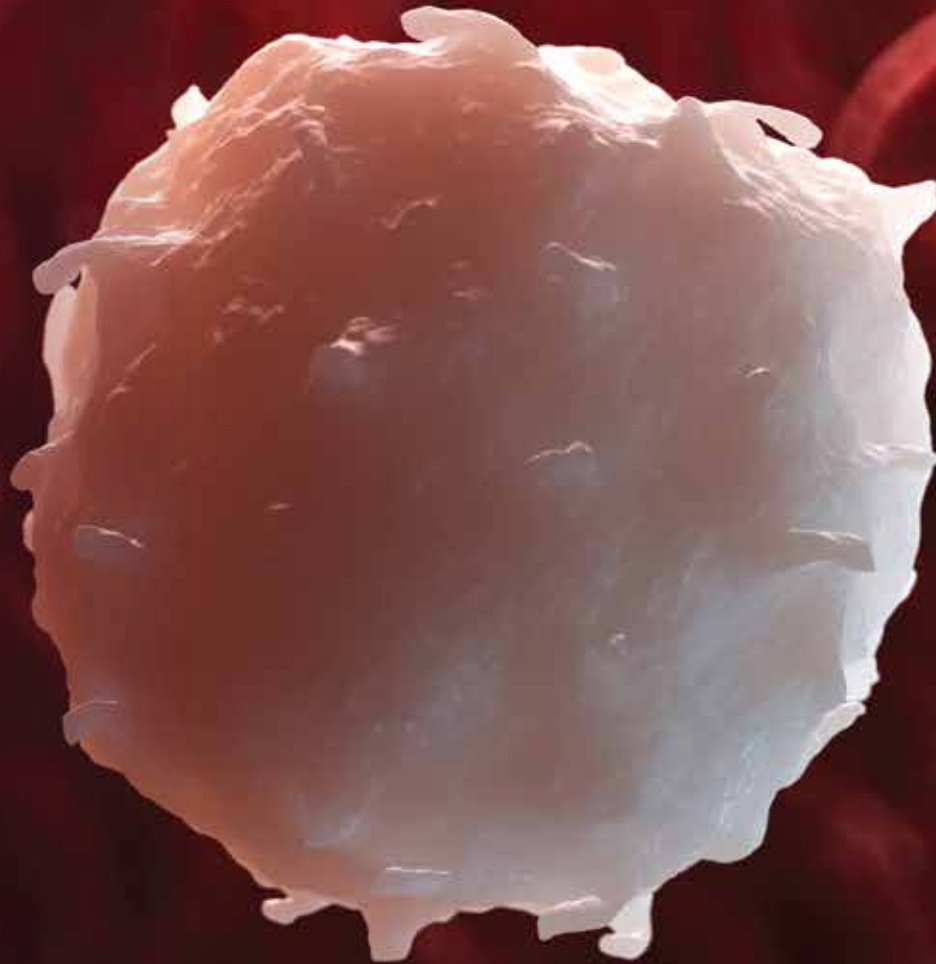
Did you know that the government reports that 104,000 Americans died of adverse drug reactions in a 12-month period? There's no evidence that number is getting smaller. We all are at risk – even more so if you take multiple medications – and that's unfortunately too many Americans.

Have you ever felt that the medical advertisements in the media or on TV do not tell the whole story? It's even hard for medical professionals to know which scientific literature is biased and based on significant financial conflicts of interest.

'A society that loses its scientific integrity is blind – unable to see its true way forward ... and will spiral downward as a society'

The first step in addressing scientific integrity is recognizing there is a problem. Did you know that only about 17% of the medical standards have real evidence behind them? The rest is merely 'expert' opinion. Frequently, this same expert opinion is financially conflicted.

NFIM is working with academic and industrial partners to expand the discussion and provide education of how 'Evidence Based Medicine' concepts are used, misused and how to tell the difference in clinical applications.



2018-2020

NFIM Research Project Portfolio

The Next Era of Medicine



National Foundation for
Integrative Medicine

CHANGING HEALTHCARE WITH 21ST CENTURY SOLUTIONS

NFIM INITIATIVE SERIES:

PROJECT 1

Photobiomodulation

The Next Era of Medicine



CHANGING HEALTHCARE WITH 21ST CENTURY SOLUTIONS

NFIM INITIATIVE SERIES:

PROJECT 2



Informatics Platform

Capturing the Evidence



National Foundation for
Integrative Medicine

CHANGING HEALTHCARE WITH 21ST CENTURY SOLUTIONS

NFIM INITIATIVE SERIES:

PROJECT 3

Energy Medicine Study

The Next Era of Medicine



National Foundation for
Integrative Medicine

CHANGING HEALTHCARE WITH 21ST CENTURY SOLUTIONS

NFIM INITIATIVE SERIES:

PROJECT 4

DoD & VA CRADAs

Teaming with our Veteran Providers



National Foundation for
Integrative Medicine

CHANGING HEALTHCARE WITH 21ST CENTURY SOLUTIONS

Opiates

Combating the Epidemic



National Foundation for
Integrative Medicine

CHANGING HEALTHCARE WITH 21ST CENTURY SOLUTIONS

NFIM INITIATIVE SERIES:

PROJECT 6



Veteran QRF (Quick Reaction Force)

Thanking Our Veterans with Actions



National Foundation for
Integrative Medicine

CHANGING HEALTHCARE WITH 21ST CENTURY SOLUTIONS

NFIM INITIATIVE SERIES:

PROJECT 7

HBOT (Hyperbaric Oxygen Therapy)

Red Team Analysis of the Evidence



National Foundation for
Integrative Medicine

CHANGING HEALTHCARE WITH 21ST CENTURY SOLUTIONS

NFIM INITIATIVE SERIES:

PROJECT 8



Fibromyalgia

Comparing Effective Treatments



National Foundation for
Integrative Medicine

CHANGING HEALTHCARE WITH 21ST CENTURY SOLUTIONS

NFIM INITIATIVE SERIES:

PROJECT 9

Animal Surveillance

Uniting Human and Veterinary Medicine for a Secure and Healthy Nation



National Foundation for
Integrative Medicine

CHANGING HEALTHCARE WITH 21ST CENTURY SOLUTIONS

NFIM INITIATIVE SERIES:

PROJECT 10

Global Survivor Support

Caring and Reuniting People, Families and Pets



National Foundation for
Integrative Medicine

CHANGING HEALTHCARE WITH 21ST CENTURY SOLUTIONS

NFIM INITIATIVE SERIES:

PROJECT 11



Predicting Infectious Disease Outbreaks

Predicting Infectious Disease Outbreaks Weeks In Advance



National Foundation for
Integrative Medicine

CHANGING HEALTHCARE WITH 21ST CENTURY SOLUTIONS

NFIM INITIATIVE SERIES:

PROJECT 12

Medical TV Channel

Education for Everyone



National Foundation for
Integrative Medicine

CHANGING HEALTHCARE WITH 21ST CENTURY SOLUTIONS

NFIM INITIATIVE SERIES:

PROJECT 13



PTSD/TBI

Transcranial Magnetic Stimulation Comparisons

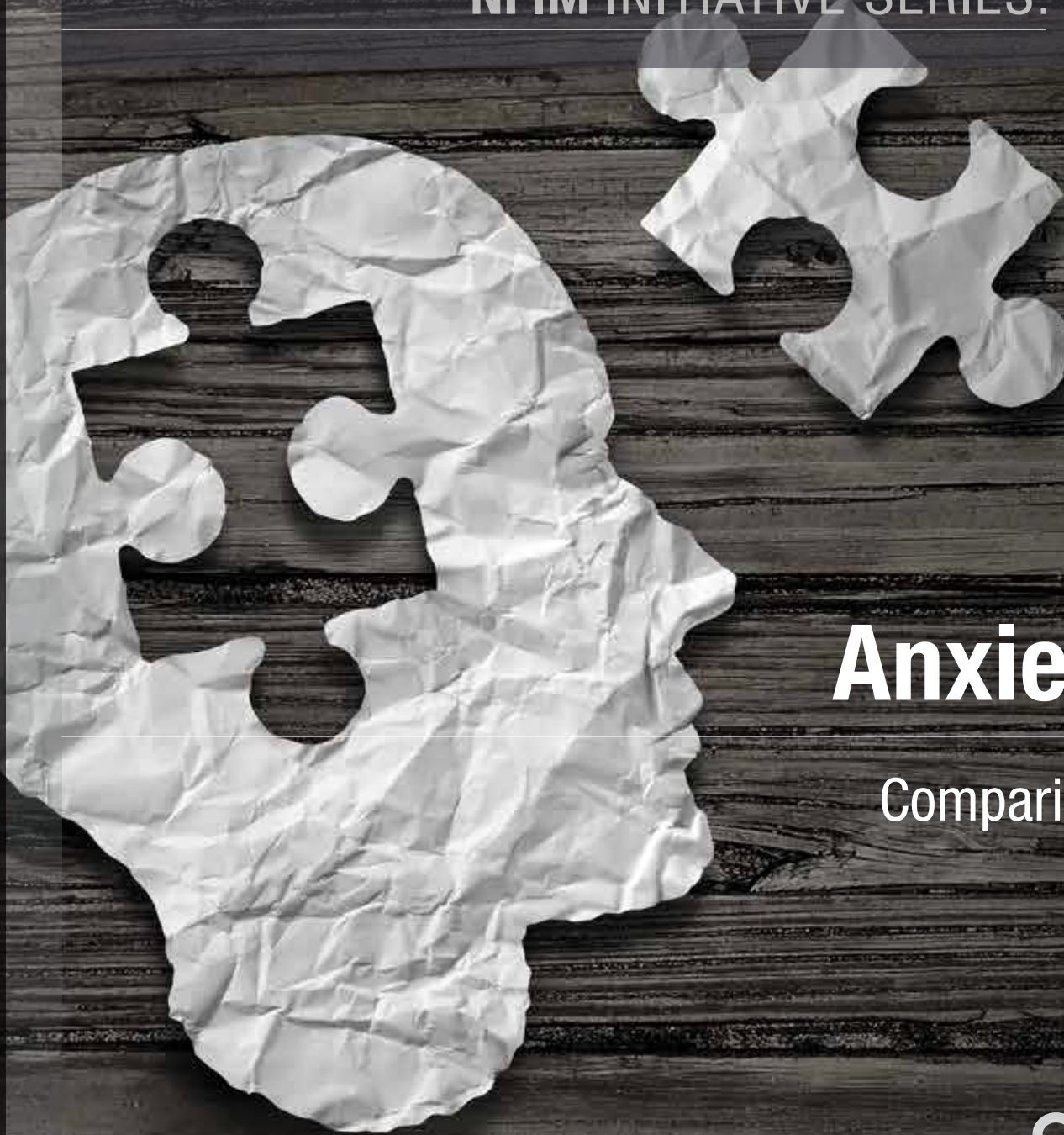


National Foundation for
Integrative Medicine

CHANGING HEALTHCARE WITH 21ST CENTURY SOLUTIONS

NFIM INITIATIVE SERIES:

PROJECT 14



Anxiety Disorders

Comparing Effective Treatments



National Foundation for
Integrative Medicine

CHANGING HEALTHCARE WITH 21ST CENTURY SOLUTIONS

NFIM INITIATIVE SERIES:

PROJECT 15

Patient & Doctor Testimonials

Changing Lives - One at a Time



National Foundation for
Integrative Medicine

CHANGING HEALTHCARE WITH 21ST CENTURY SOLUTIONS

NFIM INITIATIVE SERIES:

PROJECT 16

pEMF vs Microcurrent and LASERs

Comparing Effective Treatments for Pain



National Foundation for
Integrative Medicine

CHANGING HEALTHCARE WITH 21ST CENTURY SOLUTIONS

NFIM INITIATIVE SERIES:

PROJECT 17



Movement

The Key to Health and Function for All Ages



National Foundation for
Integrative Medicine

CHANGING HEALTHCARE WITH 21ST CENTURY SOLUTIONS

NFIM INITIATIVE SERIES:

PROJECT 18



Integrating LASER, HBOT, Microcurrent

Integrating Therapies for TBI and PTSD



National Foundation for
Integrative Medicine

CHANGING HEALTHCARE WITH 21ST CENTURY SOLUTIONS

NFIM INITIATIVE SERIES:

PROJECT 19

Wound Care Comparisons

Comparing Effective Treatments



National Foundation for
Integrative Medicine

CHANGING HEALTHCARE WITH 21ST CENTURY SOLUTIONS

NFIM INITIATIVE SERIES:

PROJECT 20

Profitable IM Offices

The Models That Allow it to Work



National Foundation for
Integrative Medicine

CHANGING HEALTHCARE WITH 21ST CENTURY SOLUTIONS

NFIM INITIATIVE SERIES:

PROJECT 21



Clinical Certification

Mastery of Technology Applications

 National Foundation for
Integrative Medicine

CHANGING HEALTHCARE WITH 21ST CENTURY SOLUTIONS

A person is shown from the waist down, sitting in a meditative pose with their legs crossed and hands clasped in their lap. They are wearing a white t-shirt and dark grey leggings. A wooden bead necklace is visible at the top left. The background is a blurred indoor setting with large windows.

NFIM INITIATIVE SERIES:

PROJECT 22

Integrating IM Domains (Body, Mind, Spirit, Emotion, Nutrition)

The Next Era of Medicine



National Foundation for
Integrative Medicine

CHANGING HEALTHCARE WITH 21ST CENTURY SOLUTIONS

NFIM INITIATIVE SERIES:

PROJECT 23

Stem Cells vs. Stem Cell Modulation Alone

Comparing Effective Treatments



National Foundation for
Integrative Medicine

CHANGING HEALTHCARE WITH 21ST CENTURY SOLUTIONS

NFIM INITIATIVE SERIES:

PROJECT 24

Securing Medical Cyber Privacy

Making the Vulnerabilities Disappear



National Foundation for
Integrative Medicine

CHANGING HEALTHCARE WITH 21ST CENTURY SOLUTIONS

NFIM INITIATIVE SERIES:

PROJECT 25

CBD Oil and Cannabis

A New Tool



National Foundation for
Integrative Medicine

CHANGING HEALTHCARE WITH 21ST CENTURY SOLUTIONS

NFIM INITIATIVE SERIES:

PROJECT 26

Myofascial Releases & New Concepts

The Fascia Matters



National Foundation for
Integrative Medicine

CHANGING HEALTHCARE WITH 21ST CENTURY SOLUTIONS

NFIM INITIATIVE SERIES:

PROJECT 27

Super Greens

Addressing America's Food Deserts



National Foundation for
Integrative Medicine

CHANGING HEALTHCARE WITH 21ST CENTURY SOLUTIONS

NFIM INITIATIVE SERIES:

PROJECT 28



Supplements

Making Sense out of Chaos and Greed



National Foundation for
Integrative Medicine

CHANGING HEALTHCARE WITH 21ST CENTURY SOLUTIONS

NFIM INITIATIVE SERIES:

PROJECT 29

Nutrition

Critical Building Blocks to Health



National Foundation for
Integrative Medicine

CHANGING HEALTHCARE WITH 21ST CENTURY SOLUTIONS

NFIM INITIATIVE SERIES:

PROJECT 30

Nutrigenomics

Personalized Nutritional Selection by Phenotype



National Foundation for
Integrative Medicine

CHANGING HEALTHCARE WITH 21ST CENTURY SOLUTIONS

NFIM INITIATIVE SERIES:

PROJECT 31



Comparison of LASER; Microcurrent; HBOT; pEMF

Comparing Effective Treatments



National Foundation for
Integrative Medicine

CHANGING HEALTHCARE WITH 21ST CENTURY SOLUTIONS



NFIM INITIATIVE SERIES:

PROJECT 32

Education Outreach

Updating Professionals and Patients Alike

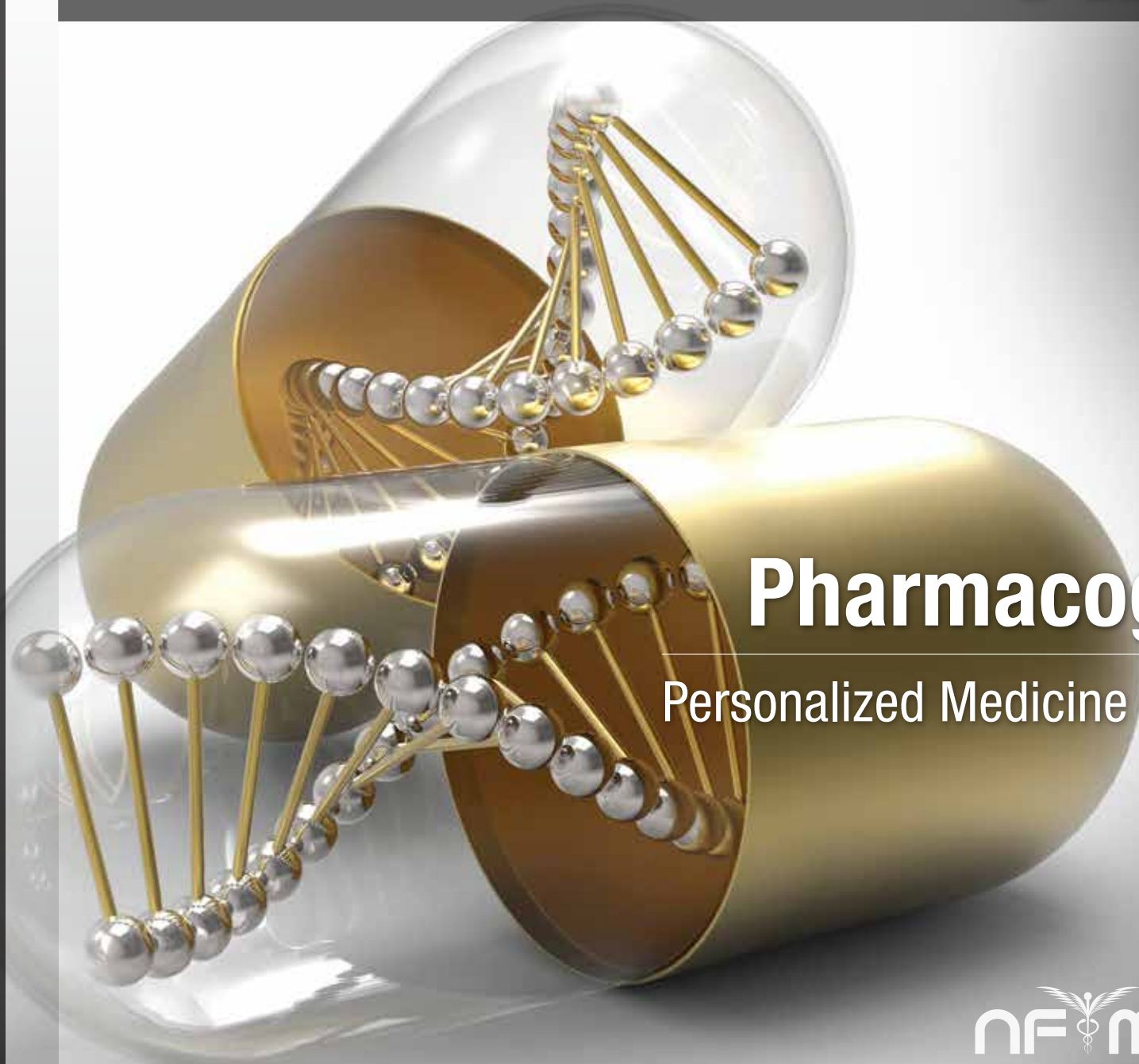


National Foundation for
Integrative Medicine

CHANGING HEALTHCARE WITH 21ST CENTURY SOLUTIONS

NFIM INITIATIVE SERIES:

PROJECT 33



Pharmacogenomics

Personalized Medicine Policy and Usage



National Foundation for
Integrative Medicine

CHANGING HEALTHCARE WITH 21ST CENTURY SOLUTIONS

NFIM INITIATIVE SERIES:

PROJECT 34

Human Biome

Capturing the Evidence of Dysfunction and Repair



National Foundation for
Integrative Medicine

CHANGING HEALTHCARE WITH 21ST CENTURY SOLUTIONS

NFIM INITIATIVE SERIES:

PROJECT 35

Next Century Technology

Exciting Frontiers



National Foundation for
Integrative Medicine

CHANGING HEALTHCARE WITH 21ST CENTURY SOLUTIONS

NFIM INITIATIVE SERIES:

PROJECT 36

Water Architecture Study

Not all water is the same.



National Foundation for
Integrative Medicine

CHANGING HEALTHCARE WITH 21ST CENTURY SOLUTIONS

NFIM INITIATIVE SERIES:

PROJECT 37



Diabetes

New Thinking; New Modalities - Capturing the Evidence



National Foundation for
Integrative Medicine

CHANGING HEALTHCARE WITH 21ST CENTURY SOLUTIONS

NFIM INITIATIVE SERIES: **PROJECT 38**



Gout

Comparing Effective Treatments



National Foundation for
Integrative Medicine

CHANGING HEALTHCARE WITH 21ST CENTURY SOLUTIONS

NFIM INITIATIVE SERIES: **PROJECT 39**

Alzheimers

Integrative Medicine Options - The Evidence



National Foundation for
Integrative Medicine

CHANGING HEALTHCARE WITH 21ST CENTURY SOLUTIONS

NFIM INITIATIVE SERIES:

PROJECT 40

Integrative Medicine and Cancer

What Should be Included; Capture the Evidence



National Foundation for
Integrative Medicine

CHANGING HEALTHCARE WITH 21ST CENTURY SOLUTIONS

NFIM INITIATIVE SERIES:

PROJECT 41

Cycling Oxygen Concentrations

Capturing the Evidence



National Foundation for
Integrative Medicine

CHANGING HEALTHCARE WITH 21ST CENTURY SOLUTIONS

NFIM INITIATIVE SERIES:

PROJECT 42



Lyme Disease

The Largest Epidemic Being Ignored



National Foundation for
Integrative Medicine

CHANGING HEALTHCARE WITH 21ST CENTURY SOLUTIONS

NFIM INITIATIVE SERIES:

PROJECT 43

Detoxification

What's Real, and What's Not.

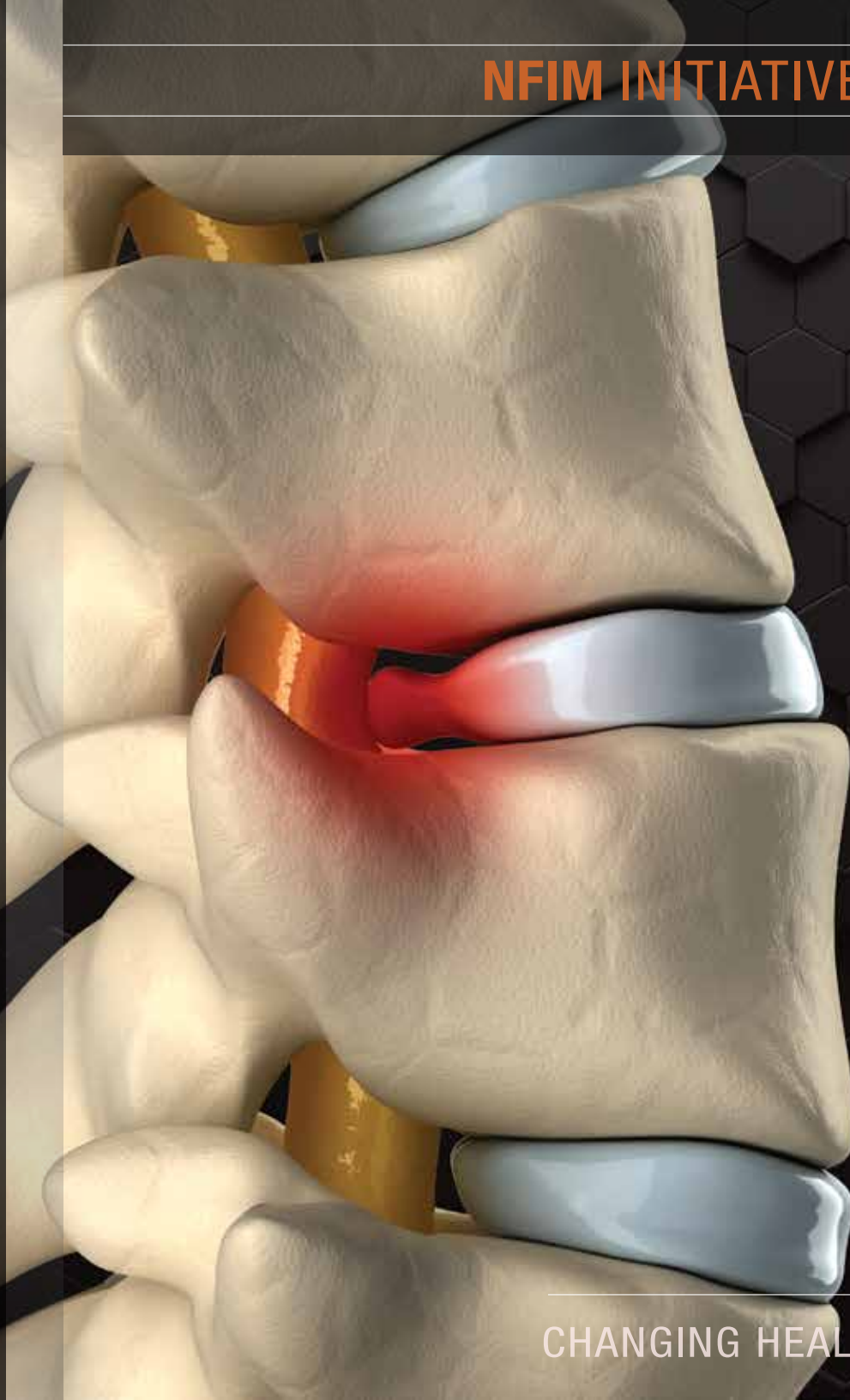


National Foundation for
Integrative Medicine

CHANGING HEALTHCARE WITH 21ST CENTURY SOLUTIONS

NFIM INITIATIVE SERIES:

PROJECT 44



Spinal Cord Injuries

Hopeless to Hopeful Solutions

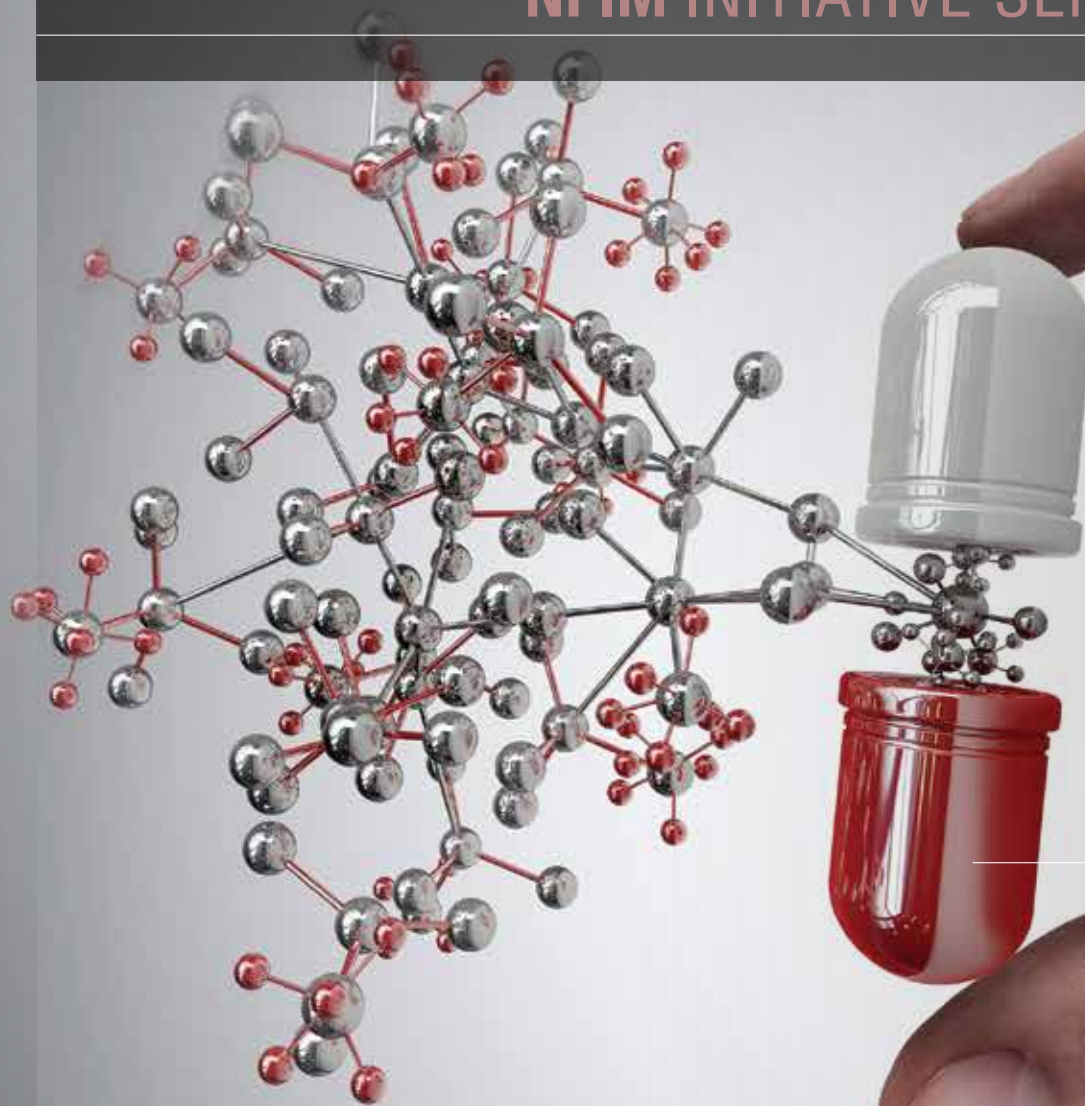


National Foundation for
Integrative Medicine

CHANGING HEALTHCARE WITH 21ST CENTURY SOLUTIONS

NFIM INITIATIVE SERIES:

PROJECT 45



Placebo

What's Real and What's Not.



National Foundation for
Integrative Medicine

CHANGING HEALTHCARE WITH 21ST CENTURY SOLUTIONS